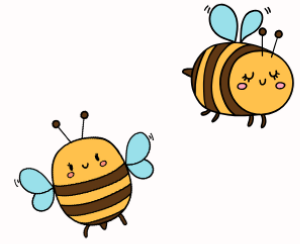




Malvern Springs
PRIMARY SCHOOL



TERM 1

5 FEBRUARY - 11 APRIL 2025

WEEK	MONDAY	TUESDAY	WEDNESDAY	THURSDAY	FRIDAY
1	SCHOOL DEVELOPMENT DAY ³	SCHOOL DEVELOPMENT DAY ⁴	STUDENTS COMMENCE ⁵	⁶	⁷
2	¹⁰	¹¹	¹²	¹³	¹⁴
3	P&C Meeting Board Meeting ¹⁷	¹⁸	¹⁹	Meet the Teacher Open Night ²⁰	Grip Student Leadership Conference ²¹
4	²⁴	²⁵	²⁶	²⁷	Yr 4-6 Assembly A1 & A3 ²⁸
5	3 MARCH LABOUR DAY NO STUDENTS	⁴	⁵	⁶	Yr 4 St John's First Aid Incursion ⁷
6	¹⁰	¹¹	NAPLAN ¹²	¹³	¹⁴
7	P&C Meeting Board Meeting NAPLAN ¹⁷	¹⁸	¹⁹	²⁰	Harmony Day PP - Yr 3 Assembly D1 & T12 ²¹
8	²⁴ NAPLAN (END)	²⁵	Yr 2 Wildlife Incursion ²⁶	²⁷	²⁸
9	³¹	¹	²	Yr 2 Bunnings Visit ³	Summer Carnival PP - Yr 3 Assembly D2 & T13 ⁴
10	⁷	⁸	⁹	Anzac Service ¹⁰	Bee Day Jump Rope for Heart ¹¹



TERM 2 COMMENCES TUESDAY 29 APRIL 2025